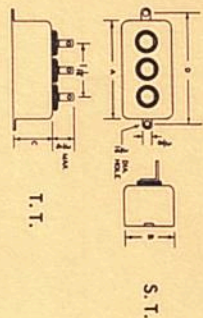


METALIZED PAPER

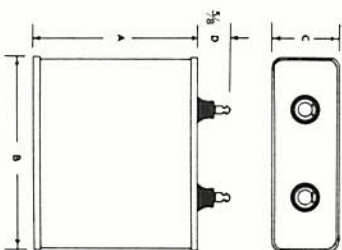
METALIZED PAPER



When Ordering, Specify Top Terminals, Bottom Terminals, or Side Terminals

PART NO.	CAPACITY	VOLTS D.C.	CAN SIZE
MKB 305-1C5	3.0	150	A1
MKB 405-1C5	4.0		A1
MKB 505-1C5	5.0		A2
MKB 605-1C5	6.0		A3
MKB 805-1C5	8.0		B1
MKB 106-1C5	10.0		B1
MKB 126-1C5	12.0		C1
MKB 156-1C5	15.0		C1
MKB 104-2C	.1	200	A1
MKB 254-2C	.25		A1
MKB 504-2C	.5		A1
MKB 105-2C	1.0		A1
MKB 205-2C	2.0		A1
MKB 405-2C	4.0		A4
MKB 505-2C	5.0	400	B1
MKB 104-4C	.1		A1
MKB 254-4C	.25		A1
MKB 504-4C	.5		A1
MKB 105-4C	1.0		A2
MKB 205-4C	2.0		A1
MKB 305-4C	3.0		B2
MKB 405-4C	4.0		B3
MKB 505-4C	5.0		C1
MKB 104-6C	.1	600	A1
MKB 254-6C	.25		A1
MKB 504-6C	.5		A1
MKB 105-6C	1.0		A3
MKB 205-6C	2.0		C1
MKB 305-6C	3.0		C2
MKB 405-6C	4.0		C3

CAN SIZE	A	B	C	D
A1	1 3/4	1	3/4	2 1/8
A2	1 3/4	1	7/8	2 1/8
A3	1 3/4	1 1/4	7/8	2 1/8
A4	1 3/4	1 1/4	1	2 1/8
B1	2	1 3/4	3/4	2 3/8
B2	2	1 3/4	7/8	2 3/8
B3	2	1 3/4	7/8	2 3/8
C1	2	2	1	2 3/8
C2	2	2	1 1/8	2 3/8
C3	2	2	1 1/4	2 3/8



PART NO.	CAPACITY	VOLTS D.C.	B	C	A
MKC 107-C5	100	50	3 3/4	2 1/2	3 7/8
MKC 127-C5	120		3 3/4	2 1/2	4 1/2
MKC 157-C5	150		3 3/4	2 1/2	4 7/8
MKC 177-C5	170		3 3/4	2 1/2	4 3/4
MKC 207-C5	200		4 9/16	3 3/4	4
MKC 257-C5	250		4 9/16	3 3/4	4 3/4
MKC 206-1C	20	100	2 1/2	1 1/4	2 3/4
MKC 256-1C	25		2 1/2	1 1/4	3 1/2
MKC 306-1C	30		2 1/2	1 1/4	3 1/2
MKC 406-1C	40		3 3/4	1 1/4	3 7/8
MKC 506-1C	50		3 3/4	1 1/4	4 1/2
MKC 606-1C	60		3 3/4	1 1/4	4 1/2
MKC 806-1C	80		3 3/4	2 1/2	3 1/4
MKC 106-2C	7.5	200	2 1/2	1 1/4	2 1/4
MKC 126-2C	10.0		2 1/2	1 1/4	2 3/4
MKC 156-2C	12.0		2 1/2	1 1/4	2 3/4
MKC 176-2C	15.0		2 1/2	1 1/4	3 1/2
MKC 206-2C	20.0		3 3/4	1 1/4	3 1/2
MKC 256-2C	25.0		3 3/4	1 1/4	3 1/2
MKC 306-2C	30.0		3 3/4	1 1/4	3 7/8
MKC 406-2C	40.0		3 3/4	1 1/4	4 7/8
MKC 506-2C	50.0		3 3/4	2 1/2	4 7/8
MKC 755-4C	7.5	400	2 1/2	1 1/4	3 1/2
MKC 106-4C	10.0		3 3/4	1 1/4	3 1/4
MKC 126-4C	12.0		3 3/4	1 1/4	3 1/4
MKC 156-4C	15.0		3 3/4	1 1/4	3 7/8
MKC 206-4C	20.0		3 3/4	2 1/2	4 7/8
MKC 256-4C	25.0		3 3/4	2 1/2	4 7/8
MKC 306-4C	30.0		3 3/4	2 1/2	3 7/8
MKC 406-4C	40.0		3 3/4	2 1/2	3 7/8
MKC 506-4C	50.0		3 3/4	2 1/2	3 7/8
MKC 755-6C	7.5	600	2 1/2	1 1/4	3 1/2
MKC 106-6C	10.0		3 3/4	1 1/4	3 7/8
MKC 126-6C	12.0		3 3/4	1 1/4	4 1/2
MKC 156-6C	15.0		3 3/4	1 1/4	4 7/8
MKC 206-6C	20.0		3 3/4	2 1/2	3 7/8