

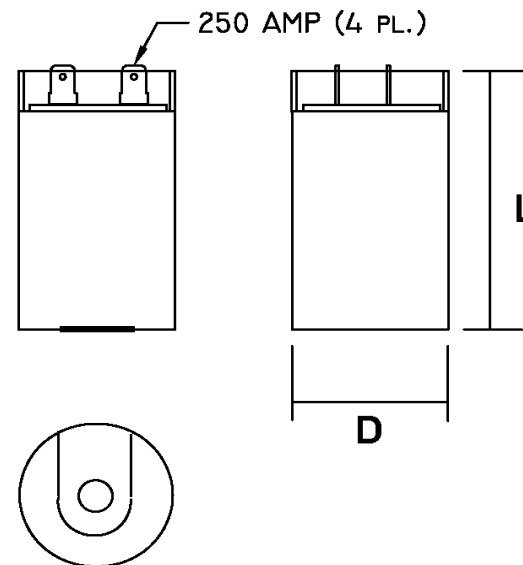
Part Number	CD60M-3CJ1822	Revision	12
Customer P/N	6100-9033	Revision	12
Capacitance	18 to 22		uF.
Voltage	330		VAC
Dielectric	Aluminum Electrolytic Motor Start		
Terminal Type	Dual .250" X .03" Quick Connect Terminals		
Operating Temperature	-40 to 65		°C.
Dissipation Factor	0.1		max. @ 60 Hz.

MOTOR Capacitors, Inc.

Motor Capacitors, Inc.
 335 Beinoris Drive
 Wood Dale, Illinois 60191
 773-774-6666 (Phone) | 773-774-6690 (Fax)
www.capacitorindustries.com
info@capacitorindustries.com

	Dimension	Tolerance
Diameter (D)	1.44	0.03
Height (L)	2.75	0.06
Quick-Connect Terminal	double	F

Dimensions in inches



Stamping
Motor Capacitors
CD60M-3CJ1822
18-22 uF. 330 VAC



Approval: *J.D. Aldana*
 Date **February 25, 2000**