

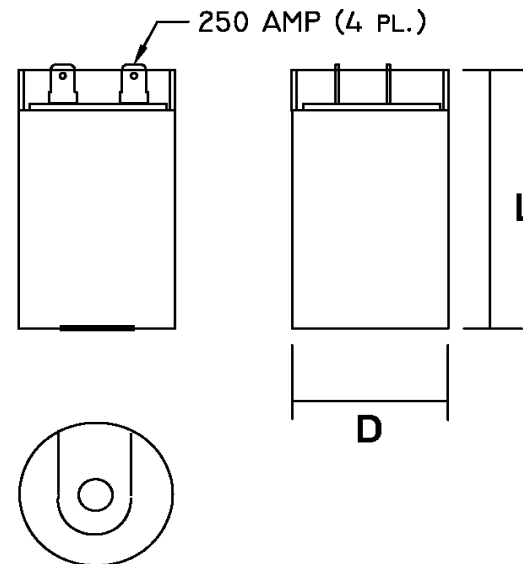
Part Number	CD60B-3CJ2530	Revision
Customer P/N	K04206-0003	Revision
Capacitance	25 to 30	uF.
Voltage	330	VAC
Dielectric	Aluminum Electrolytic Motor Start	
Terminal Type	Dual .250" X .03" Quick Connect Terminals	
Operating Temperature	-25 to 65	°C.
Dissipation Factor	0.1	max. @ 60 Hz.


MOTOR Capacitors, Inc.

Motor Capacitors, Inc.
 335 Beinoris Drive
 Wood Dale, Illinois 60191
 773-774-6666 (Phone) | 773-774-6690 (Fax)
www.capacitorindustries.com
info@capacitorindustries.com

	Dimension	Tolerance
Diameter (D)	1.81	0.03
Height (L)	3.38	0.06
Quick-Connect Terminal	double	F

Dimensions in inches



Stamping	Motor Capacitors
	CD60B-3CJ2530
	25-30 uF. 330 VAC 50/60 Hz.
	K04206-0003
	-25 ~ +65 C.
RU	(datecode) RoHS
	

Dual AMP.250 Quick-Connects

Approval: J.D. Aldana
 Date **March 24, 2003**