

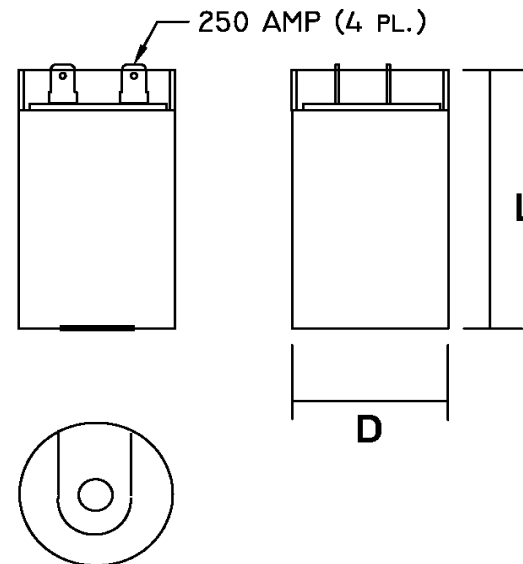
Part Number	<b>CD60B-3CJ2125-T1M1</b>		Revision
Customer P/N			Revision
Capacitance	<b>21</b>	to	<b>25</b> uF.
Voltage	<b>330</b>		VAC
Dielectric	<b>Aluminum Electrolytic Motor Start</b>		
Terminal Type	<b>Dual .250" X .03" Quick Connect Terminals</b>		
Operating Temperature	<b>-25</b>	to	<b>65</b> °C.
Dissipation Factor	<b>0.1</b>		max. @ 60 Hz.

# MOTOR Capacitors, Inc.

Motor Capacitors, Inc.  
 335 Beinoris Drive  
 Wood Dale, Illinois 60191  
 773-774-6666 (Phone) | 773-774-6690 (Fax)  
[www.capacitorindustries.com](http://www.capacitorindustries.com)  
[info@capacitorindustries.com](mailto:info@capacitorindustries.com)


	Dimension	Tolerance
Diameter (D)	1.437	0.03
Height (L)	2.75	0.06
Quick-Connect Terminal	double	F

*Dimensions in inches*



Stamping

**Motor Capacitors  
 CD60B-3CJ2125-T1M1  
 21-25 uF. 330 VAC  
 Motor Starting Capacitor  
 -25 ~ +65 C.  
 RU (datecode) RoHS  
 Type I - Heavy Duty**




Approval: J.D. Aldana  
 Date: **May 10, 2005**