

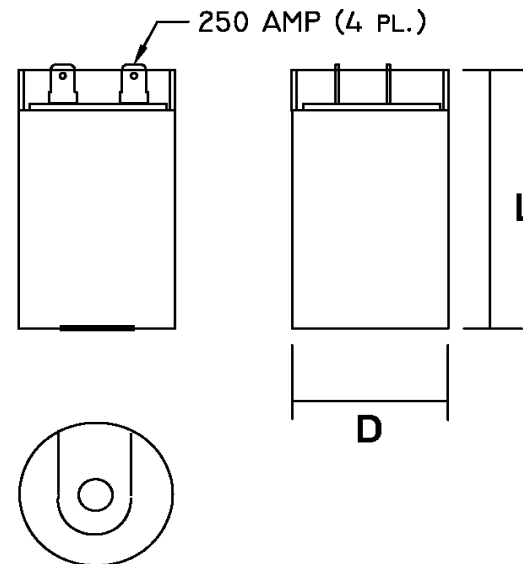
Part Number	CD60B-2EJ161196		Revision
Customer P/N			Revision
Capacitance	161	to	196 uF.
Voltage	250		VAC
Dielectric	Aluminum Electrolytic Motor Start		
Terminal Type	Dual .250" X .03" Quick Connect Terminals		
Operating Temperature	-25	to	65 °C.
Dissipation Factor	0.1		max. @ 60 Hz.

MOTOR Capacitors, Inc.

Motor Capacitors, Inc.
 335 Beinoris Drive
 Wood Dale, Illinois 60191
 773-774-6666 (Phone) | 773-774-6690 (Fax)
www.capacitorindustries.com
info@capacitorindustries.com

	Dimension	Tolerance
Diameter (D)	1.50	0.03
Height (L)	3.40	0.03
Quick-Connect Terminal	double	F

Dimensions in inches



Stamping

Motor Starting Capacitor
CD60B-2EJ161196
161 - 196 MFD
250 VAC
50/60 Hz
RU



Approval: J.D. Aldana
 Date **November 4, 2016**