

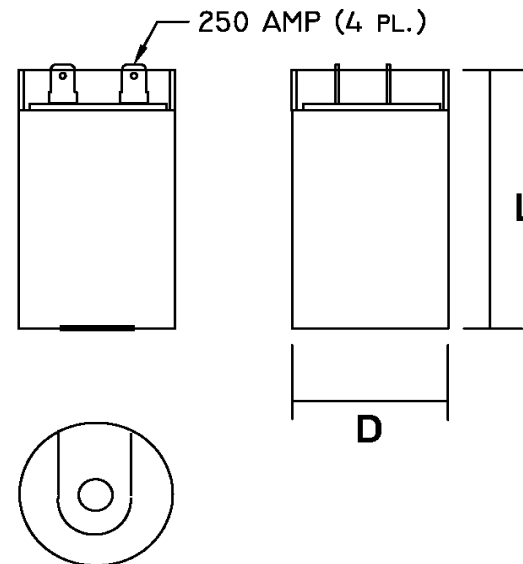
Part Number	<b>CD60B-2EJ108130</b>		Revision
Customer P/N			Revision
Capacitance	<b>108</b>	to	<b>130</b> uF.
Voltage	<b>250</b>		VAC
Dielectric	<b>Aluminum Electrolytic Motor Start</b>		
Terminal Type	<b>Dual .250" X .03" Quick Connect Terminals</b>		
Operating Temperature	<b>-25</b>	to	<b>65</b> °C.
Dissipation Factor	<b>0.1</b>		max. @ 60 Hz.

# MOTOR Capacitors, Inc.

**Motor Capacitors, Inc.**  
 335 Beinoris Drive  
 Wood Dale, Illinois 60191  
 773-774-6666 (Phone) | 773-774-6690 (Fax)  
[www.capacitorindustries.com](http://www.capacitorindustries.com)  
[info@capacitorindustries.com](mailto:info@capacitorindustries.com)


	Dimension	Tolerance
Diameter (D)	1.81	0.03
Height (L)	4.37	0.06
Quick-Connect Terminal	double	F

*Dimensions in inches*



Stamping

**Motor Capacitors**  
**CD60B-2EJ108130**  
**108-130 uF. 250 VAC**  
**Motor Starting Capacitor**  
**-25 ~ +65 C.**  
**RU (datecode) RoHS**




Approval: J.D. Aldana  
 Date: April 17, 2001