

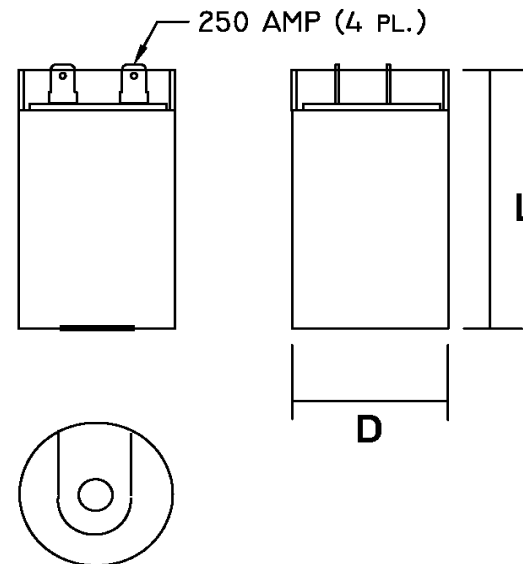
Part Number	CD60B-2BJ88108-M1	Revision	E
Customer P/N	K04327-0010	Revision	E
Capacitance	88 to 108		uF.
Voltage	220		VAC
Dielectric	Aluminum Electrolytic Motor Start		
Terminal Type	Dual .250" X .03" Quick Connect Terminals		
Operating Temperature	-25 to 65		°C.
Dissipation Factor	0.1		max. @ 60 Hz.


MOTOR Capacitors, Inc.

Motor Capacitors, Inc.
 335 Beinoris Drive
 Wood Dale, Illinois 60191
 773-774-6666 (Phone) | 773-774-6690 (Fax)
www.capacitorindustries.com
info@capacitorindustries.com

	Dimension	Tolerance
Diameter (D)	1.81	0.03
Height (L)	3.38	0.03
Quick-Connect Terminal	double	F

Dimensions in inches



Stamping	Motor Capacitors	
	CD60B-2BJ88108-M1	
	88-108 uF. 220 VAC	
	K04327-0010	
	-25 ~ +65 C.	
RU	(datecode) RoHS	

Dual AMP.250 Quick-Connects

Approval: J.D. Aldana
 Date **March 24, 2003**