

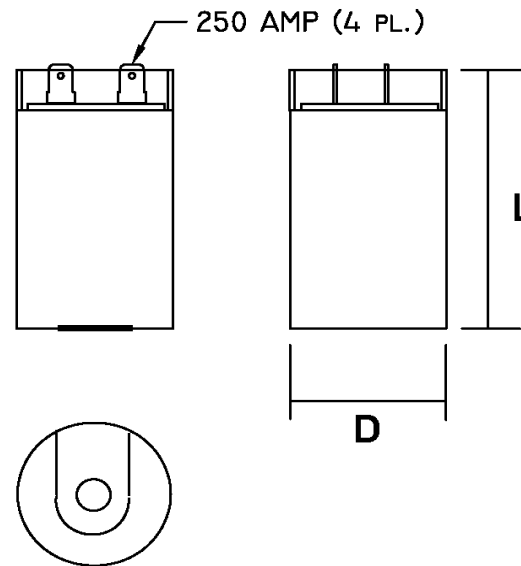
Part Number	CD60B-2BJ86103-T1M2		Revision
Customer P/N	275464118		Revision
Capacitance	86	to	103 uF.
Voltage	220		VAC
Dielectric	Aluminum Electrolytic Motor Start		
Terminal Type	Dual .250" X .03" Quick Connect Terminals		
Operating Temperature	-25	to	65 °C.
Dissipation Factor	0.1	max. @ 60 Hz.	

MOTOR Capacitors, Inc.

Motor Capacitors, Inc.
 335 Beinoris Drive
 Wood Dale, Illinois 60191
 773-774-6666 (Phone) | 773-774-6690 (Fax)
www.capacitorindustries.com
info@capacitorindustries.com


	Dimension	Tolerance
Diameter (D)	2.06	0.01
Height (L)	3.37	0.02
Quick-Connect Terminal	double	F

Dimensions in inches



Stamping

Motor Capacitors
CD60B-2BJ86103-T1M2
86-103 uF. 220 VAC
FE:275464118 Motor Start
-25 ~ +65 C.
RU (datecode) RoHS
Type I - Heavy Duty



Test Limits 7.15 - 8.55 @ 220 volts. Max 188 watts.
3-Foil Design / Construction

Approval: J.D. Aldana
 Date **September 13, 2007**