

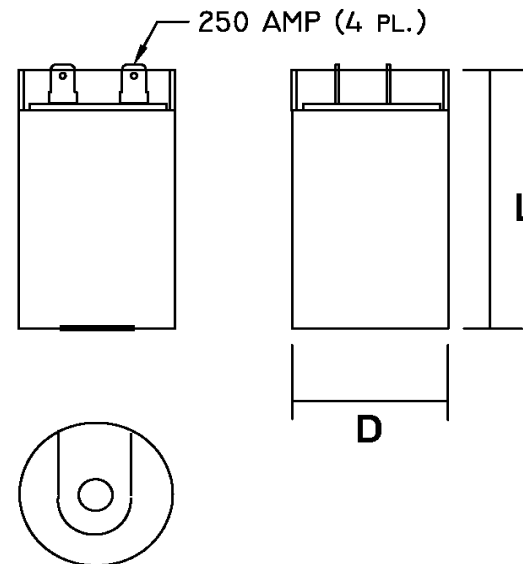
Part Number	<b>CD60B-2BJ86103-T1</b>		Revision
Customer P/N	<b>3157003</b>		Revision
Capacitance	<b>86</b>	to	<b>103</b> uF.
Voltage	<b>220</b>		VAC
Dielectric	<b>Aluminum Electrolytic Motor Start</b>		
Terminal Type	<b>Dual .250" X .03" Quick Connect Terminals</b>		
Operating Temperature	<b>-25</b>	to	<b>65</b> °C.
Dissipation Factor	<b>0.1</b>	max. @ 60 Hz.	


# MOTOR Capacitors, Inc.

**Motor Capacitors, Inc.**  
 335 Beinoris Drive  
 Wood Dale, Illinois 60191  
 773-774-6666 (Phone) | 773-774-6690 (Fax)  
[www.capacitorindustries.com](http://www.capacitorindustries.com)  
[info@capacitorindustries.com](mailto:info@capacitorindustries.com)

	Dimension	Tolerance
Diameter (D)	<b>2.062</b>	<b>0.03</b>
Height (L)	<b>3.37</b>	<b>0.06</b>
Quick-Connect Terminal	<b>double</b>	<b>F</b>

*Dimensions in inches*



Stamping	<p><b>Motor Capacitors</b>  <b>CD60B-2BJ86103-T1</b>  <b>86-103 uF. 220 VAC</b>  <b>Motor Starting Capacitor</b>  <b>-25 ~ +65 C.</b>  <b>RU (datecode) RoHS</b>  <b>Type I - Heavy Duty</b></p>	
----------	--	---

**Customer requires diameter of 2.062"**

Approval: J.D. Aldana  
 Date: **July 21, 2006**