

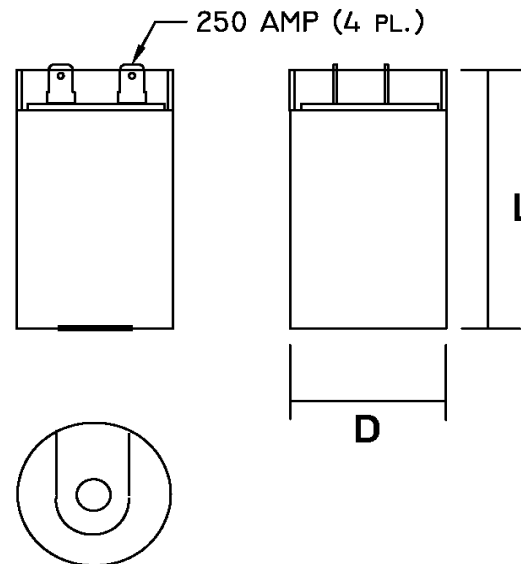
Part Number	<b>CD60B-2BJ5971-T1M2</b>	Revision
Customer P/N	<b>275464105</b>	Revision
Capacitance	<b>59 to 71</b>	uF.
Voltage	<b>220</b>	VAC
Dielectric	<b>Aluminum Electrolytic Motor Start</b>	
Terminal Type	<b>Dual .250" X .03" Quick Connect Terminals</b>	
Operating Temperature	<b>-25 to 65</b>	°C.
Dissipation Factor	<b>0.1</b>	max. @ 60 Hz.

# MOTOR Capacitors, Inc.

**Motor Capacitors, Inc.**  
 335 Beinoris Drive  
 Wood Dale, Illinois 60191  
 773-774-6666 (Phone) | 773-774-6690 (Fax)  
[www.capacitorindustries.com](http://www.capacitorindustries.com)  
[info@capacitorindustries.com](mailto:info@capacitorindustries.com)


	Dimension	Tolerance
Diameter (D)	<b>2.06</b>	<b>0.01</b>
Height (L)	<b>3.37</b>	<b>0.02</b>
Quick-Connect Terminal	<b>double</b>	<b>F</b>

*Dimensions in inches*



Stamping

**Motor Capacitors**  
**CD60B-2BJ5971-T1M2**  
**59-71 uF. 220 VAC**  
**FE:275464105 Motor Start**  
**-25 ~ +65 C.**  
**RU (datecode) RoHS**  
**Type I - Heavy Duty**



**Test Limits 4.90 - 5.90 @ 220 volts. Max 130 watts.**  
**3-Foil Design / Construction**

Approval: *J.D. Aldana*  
 Date **September 13, 2007**