

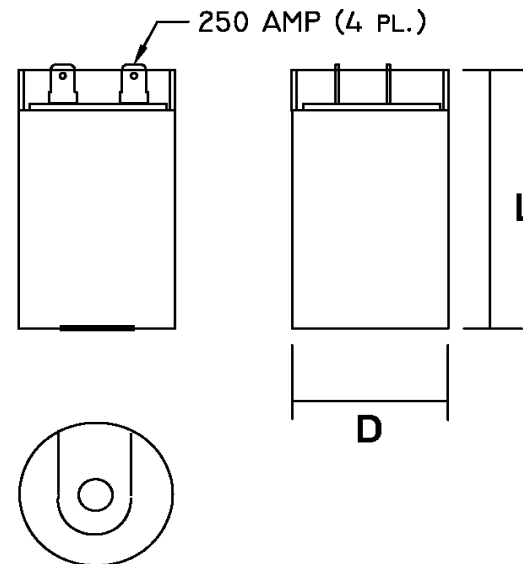
Part Number	CD60B-2BJ5971-T1M1		Revision
Customer P/N	3157400		Revision
Capacitance	59	to 71	uF.
Voltage	220		VAC
Dielectric	Aluminum Electrolytic Motor Start		
Terminal Type	Dual .250" X .03" Quick Connect Terminals		
Operating Temperature	-25	to 65	°C.
Dissipation Factor	0.1	max. @ 60 Hz.	

MOTOR Capacitors, Inc.

Motor Capacitors, Inc.
 335 Beinoris Drive
 Wood Dale, Illinois 60191
 773-774-6666 (Phone) | 773-774-6690 (Fax)
www.capacitorindustries.com
info@capacitorindustries.com


	Dimension	Tolerance
Diameter (D)	2.062	0.03
Height (L)	3.37	0.06
Quick-Connect Terminal	double	F

Dimensions in inches



Stamping

**Motor Capacitors
 CD60B-2BJ5971-T1M1
 59-71 uF. 220 VAC
 Motor Starting Capacitor
 -25 ~ +65 C.
 RU (datecode) RoHS
 Type I - Heavy Duty**



Customer requires diameter of 2.062"
3-Foil Design / Construction

Approval: J.D. Aldana
 Date: **July 21, 2006**