

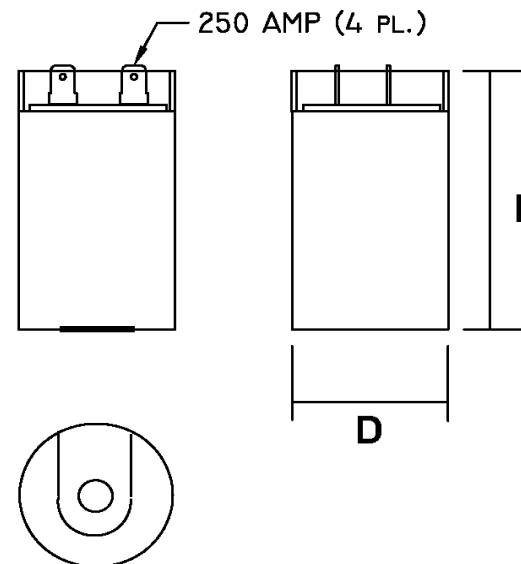
Part Number	CD60B-2BJ233280-T1M1		Revision
Customer P/N	603149		Revision
Capacitance	233	to	280 uF.
Voltage	220		VAC
Dielectric	Aluminum Electrolytic Motor Start		
Terminal Type	Dual .250" X .03" Quick Connect Terminals		
Operating Temperature	-40	to	65 °C.
Dissipation Factor	0.1		max. @ 60 Hz.


MOTOR Capacitors, Inc.

Motor Capacitors, Inc.
 335 Beinoris Drive
 Wood Dale, Illinois 60191
 773-774-6666 (Phone) | 773-774-6690 (Fax)
www.capacitorindustries.com
info@capacitorindustries.com

	Dimension	Tolerance
Diameter (D)	1.81	0.03
Height (L)	4.37	0.03
Quick-Connect Terminal	double	F

Dimensions in inches



Stamping
Fuxin Jiekeda Electronic Co. LTD
CD60B-2BJ233280-T1M1
233-280 uF. 220 VAC 603149
Motor Starting Capacitor
-40 - +65 C. 50/60 Hz.
RU cRU VDE (datecode) RoHS 
EIA 463 Type 1 - Heavy Duty

EIA 463 Type 1 - Heavy Duty

Approval: J.D. Aldana
 Date **January 22, 2013**