

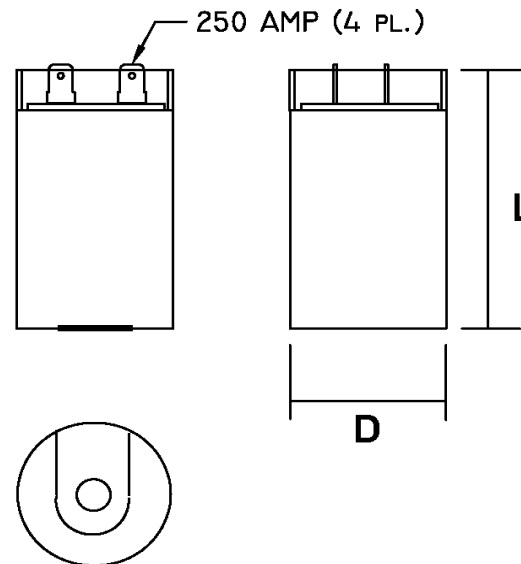
Part Number	CD60B-2BJ105126-T1M3	Revision
Customer P/N	275464113	Revision
Capacitance	105 to 126	uF.
Voltage	220	VAC
Dielectric	Aluminum Electrolytic Motor Start	
Terminal Type	Dual .250" X .03" Quick Connect Terminals	
Operating Temperature	-25 to 65	°C.
Dissipation Factor	0.1	max. @ 60 Hz.

MOTOR Capacitors, Inc.

Motor Capacitors, Inc.
 335 Beinoris Drive
 Wood Dale, Illinois 60191
 773-774-6666 (Phone) | 773-774-6690 (Fax)
www.capacitorindustries.com
info@capacitorindustries.com


	Dimension	Tolerance
Diameter (D)	2.06	0.01
Height (L)	3.37	0.02
Quick-Connect Terminal	double	F

Dimensions in inches



Stamping

Motor Capacitors
CD60B-2BJ105126-T1M3
105-126 uF. 220 VAC
FE:275464113 Motor Start
-25 ~ +65 C.
RU (datecode) RoHS
Type I - Heavy Duty



Test Limits 8.71 - 10.50 @ 220 volts. Max 231 watts.
3-Foil Design / Construction

Approval: J.D. Aldana
 Date **September 13, 2007**