

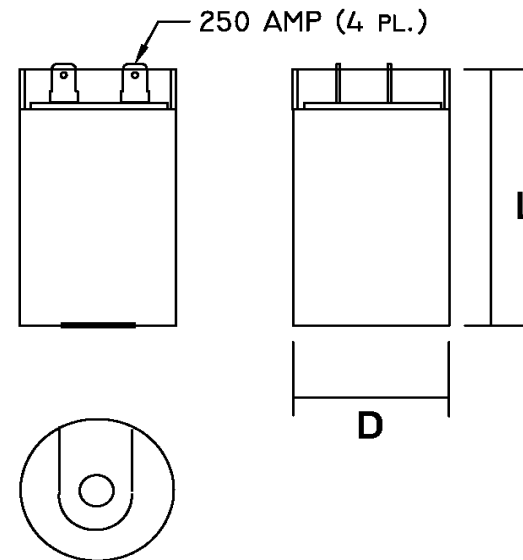
Part Number	CD60B-1FE450540		Revision
Customer P/N	596602		Revision
Capacitance	450	to	540 uF.
Voltage	165		VAC
Dielectric	Aluminum Electrolytic		
Terminal Type	Dual .250" X .03" Quick Connect Terminals		
Operating Temperature	-25	to	65 °C.
Dissipation Factor	0.1		max. @ 60 Hz.

MOTOR Capacitors, Inc.


Motor Capacitors, Inc.
 335 Beinoris Drive
 Wood Dale, Illinois 60191
 773-774-6666 (Phone) | 773-774-6690 (Fax)
www.capacitorindustries.com
info@capacitorindustries.com

	Dimension	Tolerance
Diameter (D)	2.062	0.03
Height (L)	3.38	0.03
Quick-Connect Terminal	double	F

Dimensions in inches



Stamping

Motor Capacitors
CD60B-1FE450540
450-540 uF. 165 VAC
Motor Starting Capacitor
-25 ~ +65 C. 50/60 Hz
RU cRU (datecode) RoHS CE TUV 

Type 2 - Standard Duty
0596602

Approval: J.D. Aldana
 Date: December 13, 2019