

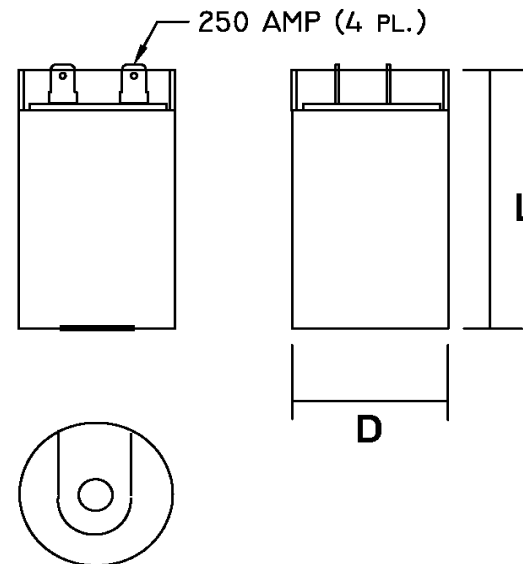
Part Number	<b>CD60B-1FE431518-T1M1</b>	Revision	<b>A</b>
Customer P/N	<b>HC150294</b>	Revision	<b>A</b>
Capacitance	<b>431 to 518</b>		<b>uF.</b>
Voltage	<b>165</b>		<b>VAC</b>
Dielectric	<b>Aluminum Electrolytic Motor Start</b>		
Terminal Type	<b>Dual .250" X .03" Quick Connect Terminals</b>		
Operating Temperature	<b>-25 to 65</b>		<b>°C.</b>
Dissipation Factor	<b>0.1</b>		<b>max. @ 60 Hz.</b>

# MOTOR Capacitors, Inc.


**Motor Capacitors, Inc.**  
 335 Beinoris Drive  
 Wood Dale, Illinois 60191  
 773-774-6666 (Phone) | 773-774-6690 (Fax)  
[www.capacitorindustries.com](http://www.capacitorindustries.com)  
[info@capacitorindustries.com](mailto:info@capacitorindustries.com)

	<b>Dimension</b>	<b>Tolerance</b>
Diameter (D)	<b>2.062</b>	<b>0.03</b>
Height (L)	<b>3.38</b>	<b>0.03</b>
Quick-Connect Terminal	<b>double</b>	<b>F</b>

*Dimensions in inches*



Stamping

**Motor Capacitors**  
**CD60B-1FE431518-T1M1**  
**431-518 uF. 165 VAC**  
**HC150294 Motor Starting Capacitor**  
**-25 ~ +65 C. 50/60 Hz**  
**RU cRU (datecode) RoHS CE TUV**   
**Type 1 - Heavy Duty**

**Type 1 - Heavy Duty**

Approval: *J.D. Aldana*  
 Date **July 5, 2016**