

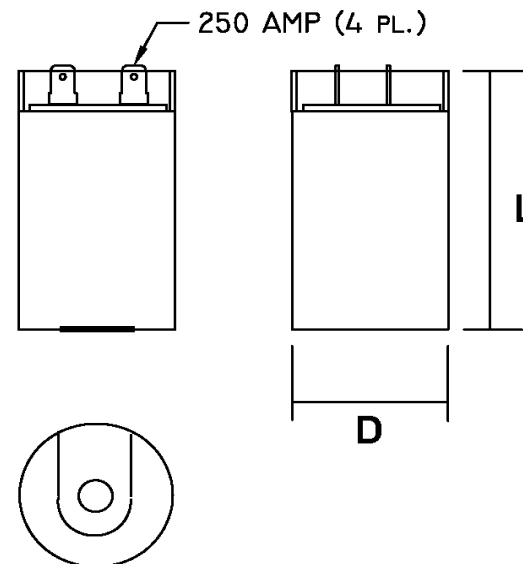
|                       |  |    |            |               |          |
|-----------------------|--|----|------------|---------------|----------|
| Part Number           | <b>CD60B-1FE233280</b>                           |    |            | Revision      | <b>A</b> |
| Customer P/N          |  |    |            | Revision      | <b>A</b> |
| Capacitance           | <b>233</b>                                       | to | <b>280</b> | uF.           |          |
| Voltage               | <b>165</b>                                       |    | <b>165</b> | VAC           |          |
| Dielectric            | <b>Aluminum Electrolytic Motor Start</b>         |    |            |               |          |
| Terminal Type         | <b>Dual .250" X .03" Quick Connect Terminals</b> |    |            |               |          |
| Operating Temperature | <b>-25</b>                                       | to | <b>65</b>  | °C.           |          |
| Dissipation Factor    | <b>0.1</b>                                       |    |            | max. @ 60 Hz. |          |

# MOTOR Capacitors, Inc.

**Motor Capacitors, Inc.**  
 335 Beinoris Drive  
 Wood Dale, Illinois 60191  
 773-774-6666 (Phone) | 773-774-6690 (Fax)  
[www.capacitorindustries.com](http://www.capacitorindustries.com)  
[info@capacitorindustries.com](mailto:info@capacitorindustries.com)


|                        | Dimension | Tolerance |
|------------------------|-----------|-----------|
| Diameter (D)           | 1.81      | 0.03      |
| Height (L)             | 4.37      | 0.03      |
| Quick-Connect Terminal | double    | F         |

*Dimensions in inches*



Stamping

**Motor Capacitors**  
**CD60B-1FE233280**  
**233-280 uF. 165 VAC**  
**Motor Starting Capacitor**  
**-25 ~ +65 C.**  
**RU cRU (datecode) RoHS**




Approval: J.D. Aldana  
 Date **August 6, 2018**