

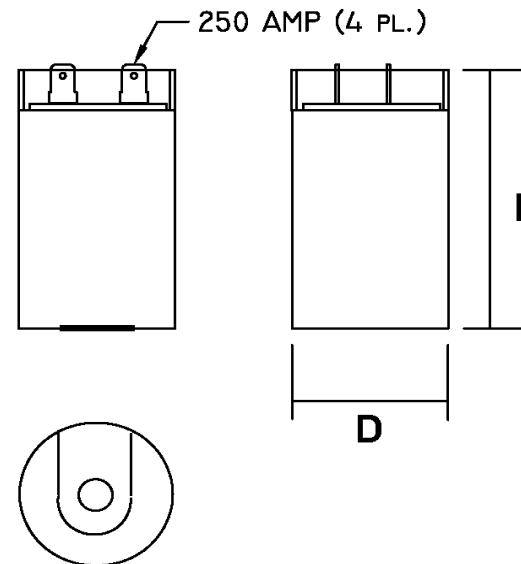
Part Number	CD60B-1BE88106		Revision
Customer P/N			Revision
Capacitance	88	to	106 uF.
Voltage	125		VAC
Dielectric	Aluminum Electrolytic Motor Start		
Terminal Type	Dual .250" X .03" Quick Connect Terminals		
Operating Temperature	-25	to	65 °C.
Dissipation Factor	0.1		max. @ 60 Hz.

MOTOR Capacitors, Inc.

Motor Capacitors, Inc.
 335 Beinoris Drive
 Wood Dale, Illinois 60191
 773-774-6666 (Phone) | 773-774-6690 (Fax)
www.capacitorindustries.com
info@capacitorindustries.com

	Dimension	Tolerance
Diameter (D)	1.437	0.03
Height (L)	2.75	0.03
Quick-Connect Terminal	double	F

Dimensions in inches



Stamping	<p>Motor Capacitors CD60B-1BE88106 88-106 uF. 125 VAC Motor Starting Capacitor -25 ~ +65 C. RU (datecode) RoHS</p>	
----------	---	--



Approval: J.D. Aldana
 Date **August 8, 2002**