

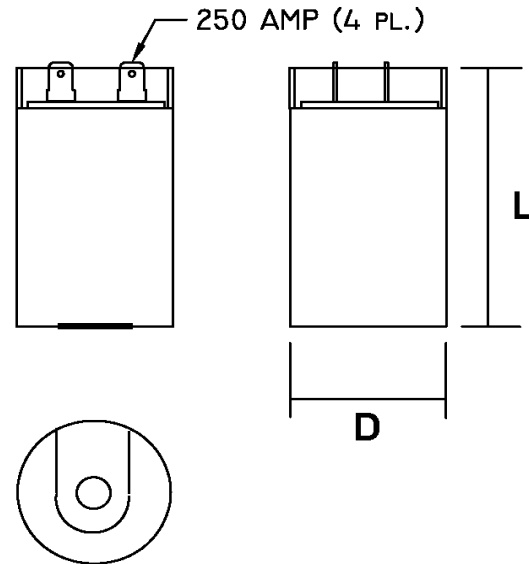
Part Number	CD60B-1BE708850-T1M1		Revision
Customer P/N			Revision
Capacitance	708	to	850 uF.
Voltage	125		VAC
Dielectric	Aluminum Electrolytic Motor Start		
Terminal Type	Dual .250" X .03" Quick Connect Terminals		
Operating Temperature	-25	to	65 °C.
Dissipation Factor	0.1		max. @ 60 Hz.

MOTOR Capacitors, Inc.

Motor Capacitors, Inc.
 335 Beinoris Drive
 Wood Dale, Illinois 60191
 773-774-6666 (Phone) | 773-774-6690 (Fax)
www.capacitorindustries.com
info@capacitorindustries.com


	Dimension	Tolerance
Diameter (D)	2.06	0.03
Height (L)	4.37	0.03
Quick-Connect Terminal	double	F

Dimensions in inches



Stamping

Motor Capacitors
CD60B-1BE708850-T1M1
708-850 uF. 125 VAC
Motor Starting Capacitor
-25 ~ +65 C.
RU (datecode) RoHS
Type 1 - Heavy Duty



Type 1 - Heavy Duty

Approval: J.D. Aldana
 Date: July 13, 2011