

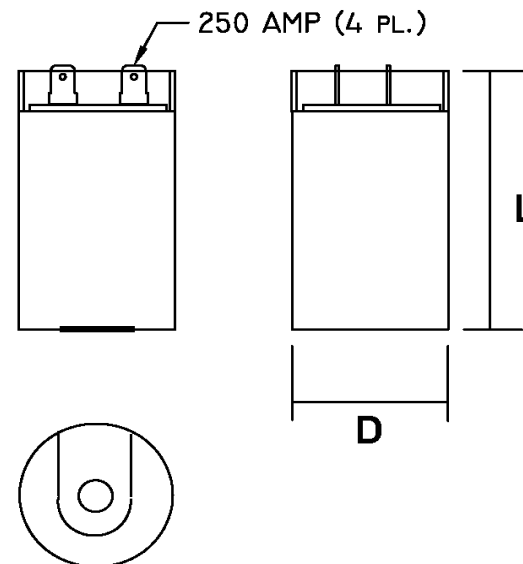
Part Number	CD60B-1BE708850			Revision
Customer P/N				Revision
Capacitance	708	to	850	uF.
Voltage	125		VAC	
Dielectric	Aluminum Electrolytic Motor Start			
Terminal Type	Dual .250" X .03" Quick Connect Terminals			
Operating Temperature	-25	to	65	°C.
Dissipation Factor	0.1		max. @ 60 Hz.	

MOTOR Capacitors, Inc.

Motor Capacitors, Inc.
 335 Beinoris Drive
 Wood Dale, Illinois 60191
 773-774-6666 (Phone) | 773-774-6690 (Fax)
www.capacitorindustries.com
info@capacitorindustries.com


	Dimension	Tolerance
Diameter (D)	2.06	0.03
Height (L)	4.37	0.03
Quick-Connect Terminal	double	F

Dimensions in inches



Stamping

Motor Capacitors
CD60B-1BE708850
708-850 uF. 125 VAC
Motor Starting Capacitor
-25 ~ +65 C.
RU (datecode) RoHS




Approval: *J.D. Aldana*
 Date **June 18, 2009**