

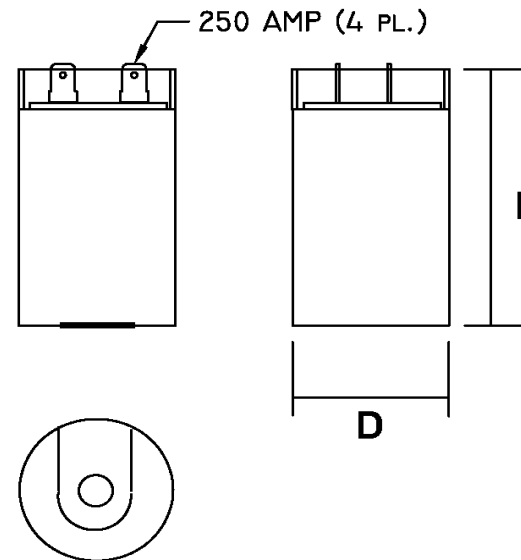
Part Number	CD60B-1BE270324R-T1M1			Revision
Customer P/N				Revision
Capacitance	270	to	324	uF.
Voltage	125		VAC	
Dielectric	Aluminum Electrolytic			
Terminal Type	Dual .250" X .03" Quick Connect Terminals			
Operating Temperature	-25	to	65	°C.
Dissipation Factor	0.1		max. @ 60 Hz.	

MOTOR Capacitors, Inc.

Motor Capacitors, Inc.
 335 Beinoris Drive
 Wood Dale, Illinois 60191
 773-774-6666 (Phone) | 773-774-6690 (Fax)
www.capacitorindustries.com
info@capacitorindustries.com

	Dimension	Tolerance
Diameter (D)	1.44	0.03
Height (L)	3.37	0.06
Quick-Connect Terminal	double	F

Dimensions in inches



Stamping	<p>Motor Capacitors CD60B-1BE270324R-T1M1 270-324 uF. 125 VAC Motor Starting Capacitor -25 ~ +65 C. RU (datecode) RoHS</p>	
----------	---	--

Type 1 - Heavy Duty

24K Ohm, 1 watt resistor attached

Approval: J. D. Aldana
 Date: July 21, 2006