

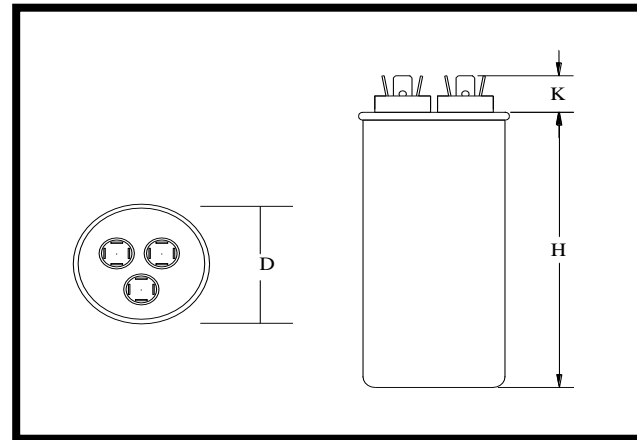
Part Number	CBB65-440R0545-M1		Revision
Customer P/N	651405		Revision
Capacitance	45 + 5	uF.	Tolerance 5%
Voltage	440	VAC	
Dielectric	Metallized Polypropylene		
Terminal Type	.250" Quad-Spade Quick Connect Terminals		
Operating Temperature	-25 oC.-	85 °C.	
Dissipation Factor	0.001	maximum @ 60 Hz.	


MOTOR Capacitors, Inc.

Motor Capacitors, Inc.
335 Beinoris Drive
Wood Dale, Illinois 60191
773-774-6666 (Phone) | 773-774-6690 (Fax)
www.capacitorindustries.com
info@capacitorindustries.com

	Dimension	Tolerance
Case Diameter (D)	2.50	0.06
Case Height (H)	3.94	0.06
Terminal Height (K)	0.56	ref.
Terminal-Terminal (M)	0.81	ref.
Insulating Cup (dia.)	0.74	

Dimensions in inches



Stamping	Wuxi - Motor Cap			
	CBB65-440R0545-M1			
	45+5uF 5% 440 VAC			
	-25 - +85 C. 50/60 Hz.			
				US
	Protected 10,000 AFC			
Non PCB	RU	cRU	Date Code	RoHS

Terminals: Herm (Red-3), Fan (White-1), Common (Black-4)

Approval: *J.D Aldana*
Date: June 28, 2004